



## Accommodation

### Homestay

You may like to live in a private home with an Australian family. This can be either "full board" where all meals are provided for you, or a more independent "room only" arrangement, where you provide and cook your own meals and share household chores and costs.

Homestay families are all carefully chosen by the Tasmanian Polytechnic. All Homestay families undergo a police check and an interview by Tasmanian Polytechnic International Student Advisers. The home is assessed for its suitability for international students. All students will have their own bedroom with space for study.

Homestay will give you the opportunity to learn about Australian culture, to make new friendships and will give you constant practice in speaking English in real-life situations. Sometimes staying with a homestay can be difficult, but it is worth the effort. It will give you a lot of confidence and will help you understand different people and different customs.

Homestay will only be arranged for students studying 12 weeks or longer. Homestay requests outside this duration may be considered subject to availability.

Most homestays can only offer students limited internet access (emailing & general browsing). Please ask the Student Adviser if internet access is important for you. The Student Adviser can help students setup their own account.

### Residences

Student residences are located on or near the Tasmanian Polytechnic campuses. In Hobart and Launceston the residences are a 15 minute bus journey from their city centres. In Launceston, a free bus is available to transfer students to the city campus each morning. Accommodation in the residences consists of fully furnished units for up to four people. Each person has a single, private study/bedroom, and shares a lounge room with TV, bathroom (shower only), toilet and fully equipped kitchenette with a refrigerator and small stove. Other facilities include use of a coin-operated laundry with washing machines, driers, iron and ironing board, a games room with billiard and table tennis tables, and a general student lounge.

### Your own house

Accommodation in flats and houses can only be arranged after you arrive in Tasmania. We recommend that students begin their experience in Tasmania by staying in a homestay or a Student Residence. Students wanting to rent a flat or house must register personally with Real Estate Agencies prior to rental unless they make a private rental agreement directly with an owner. Most owners ask for a bond equivalent in value to either two weeks or one month rent. The bond will be returned to you when you leave the flat only if you have met the conditions of the lease and you have left the flat in good condition. Rent is payable in advance, usually every two weeks.

#### Unfurnished

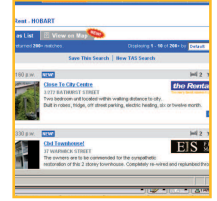
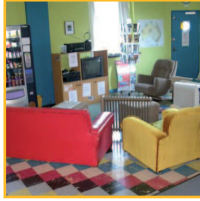
If you rent an unfurnished house or flat you will usually have to provide everything except a cooktop and oven. Sometimes a refrigerator and washing machine will be provided. Average rent is \$140-\$2000 per week. Electricity and telephone charges are extra.

#### Furnished

These are more expensive than unfurnished places but they should contain all of your basic furniture needs. Rents will vary depending on the size and location of the accommodation. Average rent is \$200 per week for a one-bedroom flat or unit. Electricity and telephone charges are extra.

### Shared housing

Shared Housing is a more independent style of accommodation which suits many students. A number of students can live in a larger house and share the facilities provided. There could be a mixture of students attending different schools and colleges. Usually students can expect their own furnished bedroom complete with bed, mattress, study desk and clothes storage. Most shared houses provide bed linen and bedding, however some do not. Shared facilities include kitchen, bathroom, lounge and laundry. Items such as basic pots, pans, crockery are provided. The rent may or may not include electricity. The average cost per week can range from \$120, depending upon the facilities offered. Most owners ask for a bond equivalent in value to either two weeks or one month rent. Rent is payable in advance, usually every two weeks.



# Accommodation

## Accommodation Prices

There is no accommodation placement fee at the Tasmanian Polytechnic.

Homestay costs from **\$200 per week** for full board. Your homestay costs will depend on what is available at the time of your application and tuition payment. Costs are determined by the facilities provided and by factors such as the distance from Tasmanian Polytechnic. There are limited room-only homestay places. These cost from **\$120 per week**.

Residence costs are room only. Students must provide their own food and cook for themselves. Room only costs approximately **\$140 per week**.

Local backpackers vary their weekly prices according to the season, however students do often receive good weekly rates. If you decide to book directly, let the backpacker know you have been directed to them by the Tasmanian Polytechnic and that you are applying for special student rates. Prices range from **\$150 per week**; most prices are for dormitory rooms.

## Hobart

### The Pickled Frog

Email: [info@thepickledfrog.com](mailto:info@thepickledfrog.com)  
Web: [www.thepickledfrog.com](http://www.thepickledfrog.com)

### Ocean Child Backpackers

Email: [enquiries@oceanchildinn.com](mailto:enquiries@oceanchildinn.com)

### Nararra Backpackers

Web: [www.narrarabackpackers.com](http://www.narrarabackpackers.com)

### Montgomery's

Email: [montys@yhatas.org.au](mailto:montys@yhatas.org.au)  
Web: [www.montgomerys.com.au](http://www.montgomerys.com.au)

### Hobart Hostel

Email: [info@hobarthostel.com](mailto:info@hobarthostel.com)  
Web: [www.hobarthostel.com](http://www.hobarthostel.com)

### Central City Backpackers

Email: [bookings@centralcityhobart.com](mailto:bookings@centralcityhobart.com)  
Web: [www.centralcityhobart.com](http://www.centralcityhobart.com)

## Launceston

### Tamar Bridge No. 1 Backpackers

Email: [info@backpackerhub.com.au](mailto:info@backpackerhub.com.au)  
Web: <http://www.backpackerhub.com.au/>

### Launceston Backpackers

Email: [launcestonbpackers@bigpond.com](mailto:launcestonbpackers@bigpond.com)  
Web: <http://www.launcestonbackpackers.com.au/>

## Real Estate Agents

To rent a house or flat, you will usually need to apply through a real estate agent. You will need to supply a lot of personal information and referees or guarantors.

Real estate web links that show houses available and prices can be seen at:

[www.realestate.com.au](http://www.realestate.com.au)

## Private Housing

You can also rent houses and flats from private individuals. These are advertised in the local papers on Saturdays and Wednesdays.

### The Mercury (Hobart)

### The Examiner (Launceston)

### A Note!

If you want us to help you with your accommodation and arrival, make sure you have sent us your completed Accommodation and Arrival Forms at least a month before you leave your home country.